



Off Grid Solar Solutions

2022



POWERED BY
PROME



Solar Energy around the world

In the past thousand of years, humankind mainly uses fossil energy, like oil, natural gas etc.

However, with global warm becoming worse, it will be not sustainable, since photovoltaic effect was found in 1839, solar energy has been developed dramatically. From earth to space , It is transforming our life and thinking.

In solar system, inverter is key device which is used to convert PV power to AC. Good inverter will improve your electrical quality and make us own better life.

Why to choose hybrid inverter

Inverter Function

Hybrid inverter integrates 2 function : Grid and EPS function, which means they can work like Grid tied inverter and Off grid inverter. When power cut occurs, battery system could provide enough power for the load.

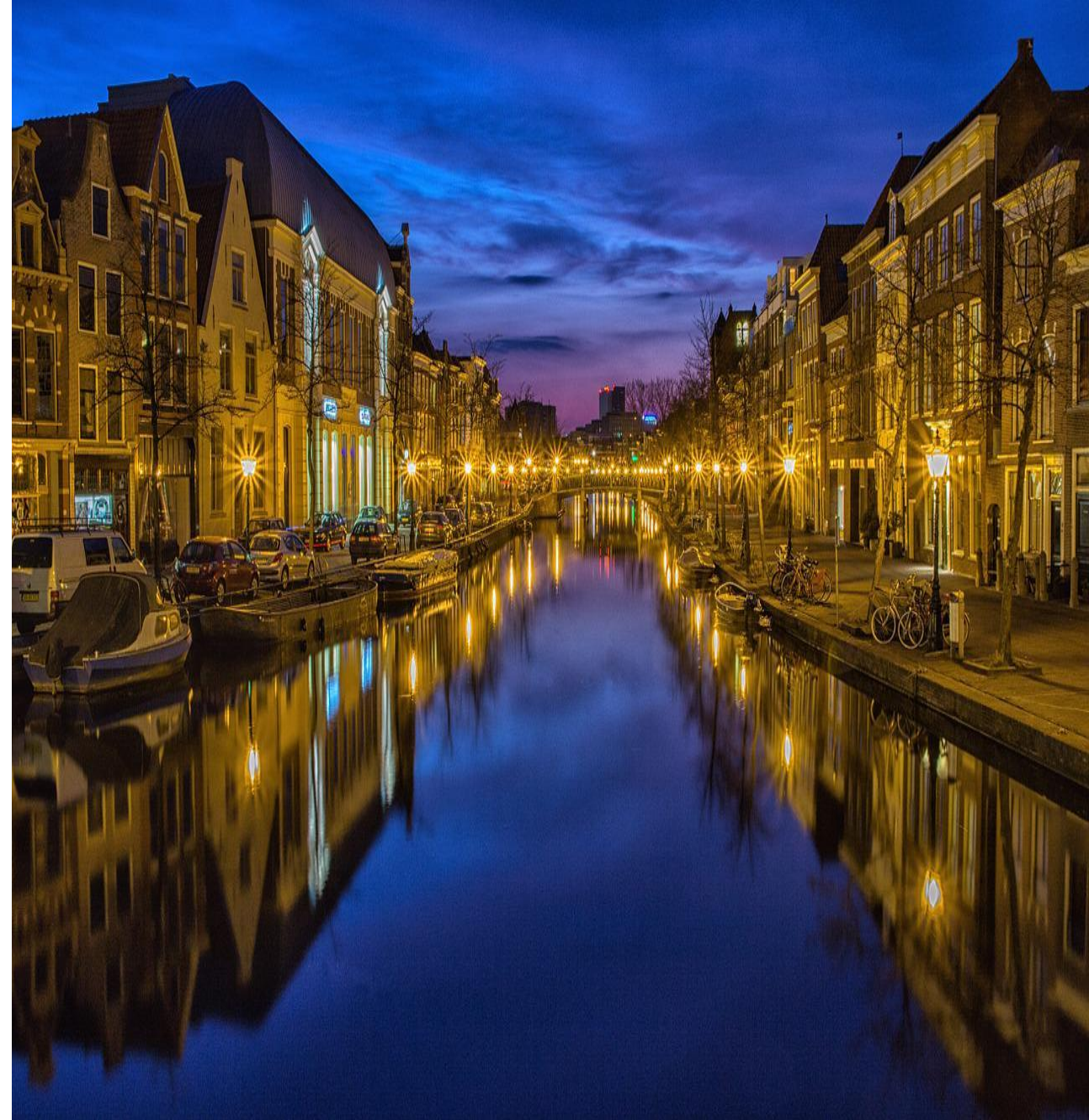
It can make full use of valley energy and benefit you a lot.

Quality

Hybrid inverter has integrated perfect function and make inverter run without malfunction. Key components are designed for better quality and come from TI etc.

Warranty

In usual, the warranty is 5 years. Not like off grid inverter, just 2 years.





Mission Statement

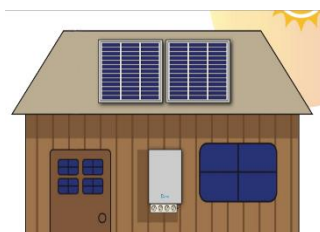
Our mission is to create excellent smart products, including Inverter, Storage system, Smart remote monitoring, Smart Maintenance via Big Data etc.

About US

HK Prome Smart Science Ltd. has been registered in HK, which aims to achieve the goal that make new energy become more affordable and help those people who can't use electricity. Equity is our pursue in the world.



Hybrid inverter Application



Hybrid inverter is integrated with Grid and EPS function and own longer life span.

Our Hybrid products has been exported to many countries like America, Europe, Africa etc.





Mountain Aria



Family House



Island



Tour



Pasturing



Touring car

How to choose hybrid inverter

Inverter power

You need to have the statistics about your load and know about what are resistive and inductive load.

Our family load mainly contains Resistive and inductive load.

Capacitive load is like Light, Water heater, Electric oven etc.

Inductive load is like Air fan, Washing machine, Air conditioning, refrigerator, Electromotor etc.

In usual, hybrid grid inverter can have 2 times of rated AC output power. When Inductive load starts working, 3-7 times rated power of appliance is needed. For example, 1000W air conditioning, Peak surge power is 7000W, so you must choose 3500W inverter at least.

Air conditioner has 2 types: variable frequency air conditioner and Non-variable frequency. Non-variable frequency air conditioner needs to be calculated according to 7 times rated power. While variable frequency air conditioner is almost 4 times rated power. So 1000W variable frequency air conditioner can choose 2000W inverter.

Inverter Efficiency

Hybrid inverter is integrated with Grid and EPS function. The efficiency should be larger than 96%

IP Level

IP65; It could be used outdoors.

Perfect protection function

anti-islanding protection; PV anti-reverse protection; Overcurrent protection etc.

Warranty

5-10 years; Longer warranty could make you have no anxiety about after sale .



Using Environment

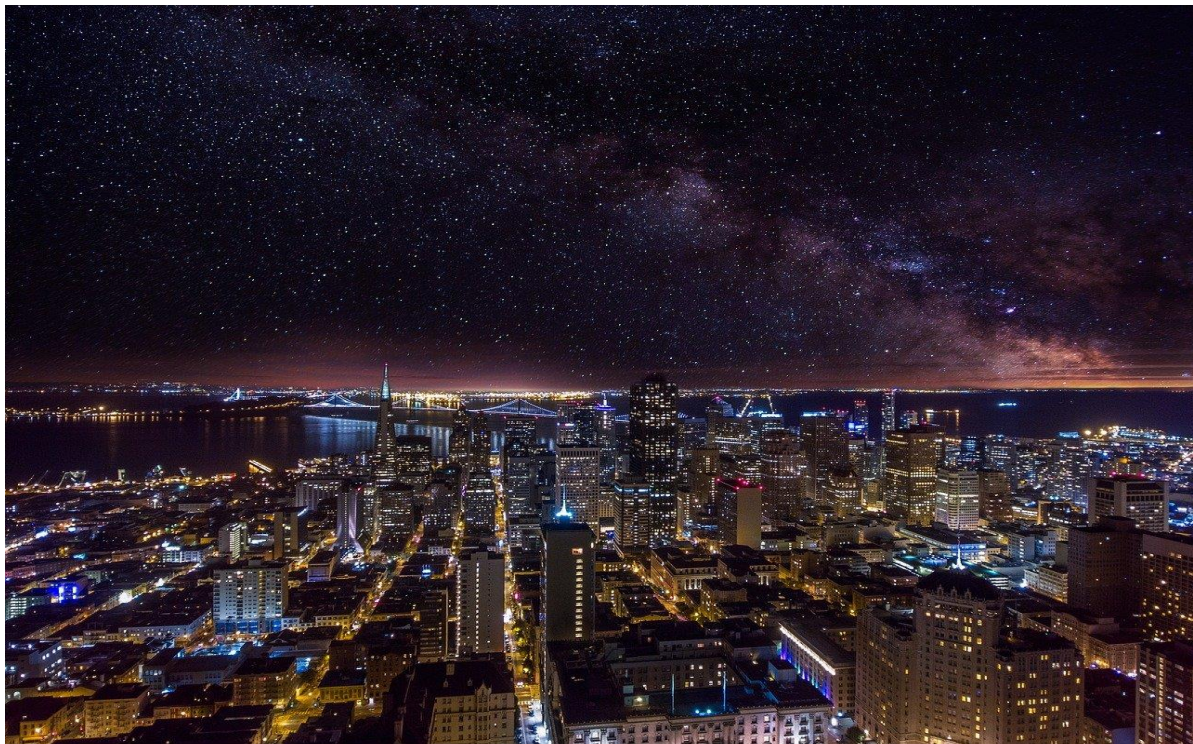
-45~60°C

Monitoring

Remote monitoring

Communication

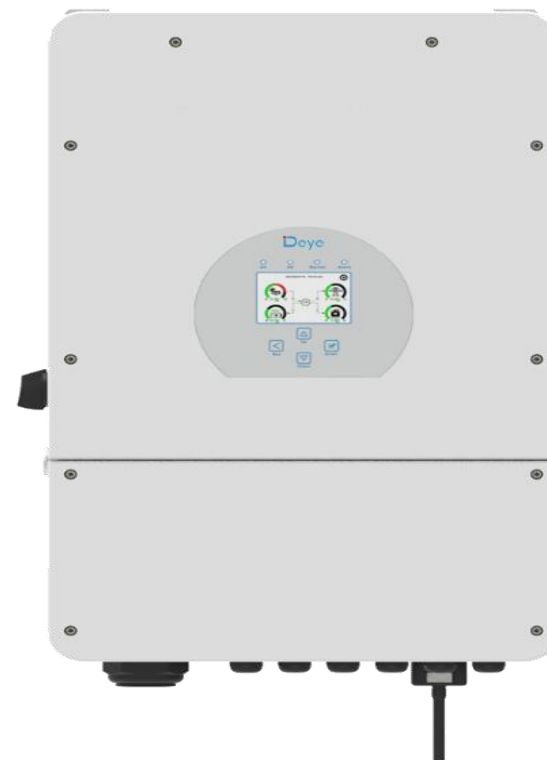
485 or CAN communication



Here is SUN 8KVA Hybrid Inverter and very popular in the world

IP65 protection level and it can be installed outdoor.

MAX 16 PCS in parallel for on-grid and off grid operation



SUN 8000VA Hybrid INVERTER

SUN **8000VA**

Main Features

- SUN 8000VA, expand your expectation
- MAX 16 pcs in parallel
- MAX Charging and discharging current 190A



- DC couple and AC couple to retrofit existing solar system
- Support storing energy from diesel generator
- Colorful touch LCD, IP65 protection degree

- 6 time periods for battery charging/discharging



Ideal Inverter for solar power

SUN-8K-SG03LP1-US/EU

Max PV Array Power	10400W
Rated PV Input Voltage (V)	370 (125~500)
MPPT Voltage Range (V)	150-425
Start-up Voltage (V)	125
Full Load DC Voltage Range (V)	200-425
Parallel Capability	YES, 16 Units

PV Input Current (A)	26+26
Number of MPPT / Strings per MPPT	2/2+2
AC Output	
Rated AC Output and UPS Power (W)	8000
Max. AC Output Power (W)	8800
AC Output Rated Current (A)	36.4
Max. AC Current (A)	40
Peak Power	2 time of rated power, 10 S
Power Factor	0.8 leading to 0.8 lagging
Output Frequency and Voltage	50/60Hz; L/N/PE 220/230Vac (single phase)
Grid Type	Single Phase
DC injection current (mA)	THD<3% (Linear load<1.5%)
Efficiency	
Max. Efficiency	97.6%
Euro Efficiency	96.5%
MPPT Efficiency	> 99%

Battery input data

battery type	Lead acid battery or Lithium-ion
Battery Voltage Range (V)	40~60V
Max. Charging Current (A)	190
Max. Discharging Current (A)	190
Charging Curve	3 Stages / Equalization
Charging strategy for lithium-ion battery	Self-adaption to BMS

Protection

PV Input Lightning Protection
Anti-islanding Protection
PV String Input Reverse Polarity Protection
Insulation Resistor Detection
Residual Current Monitoring Unit
Output Over Current Protection,
Surge protection

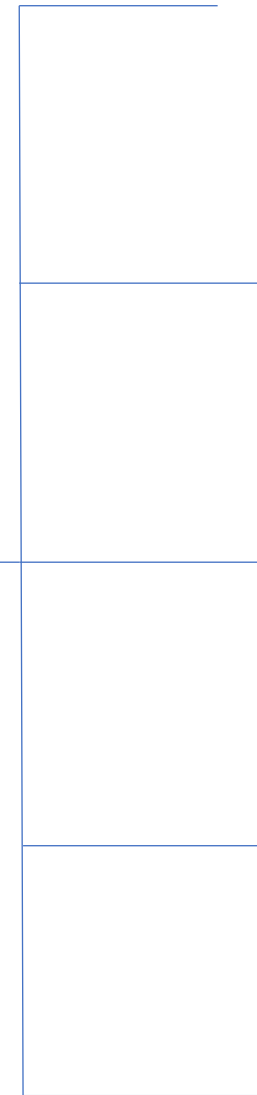
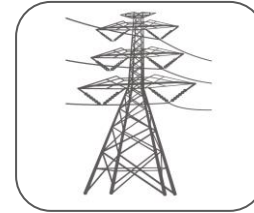
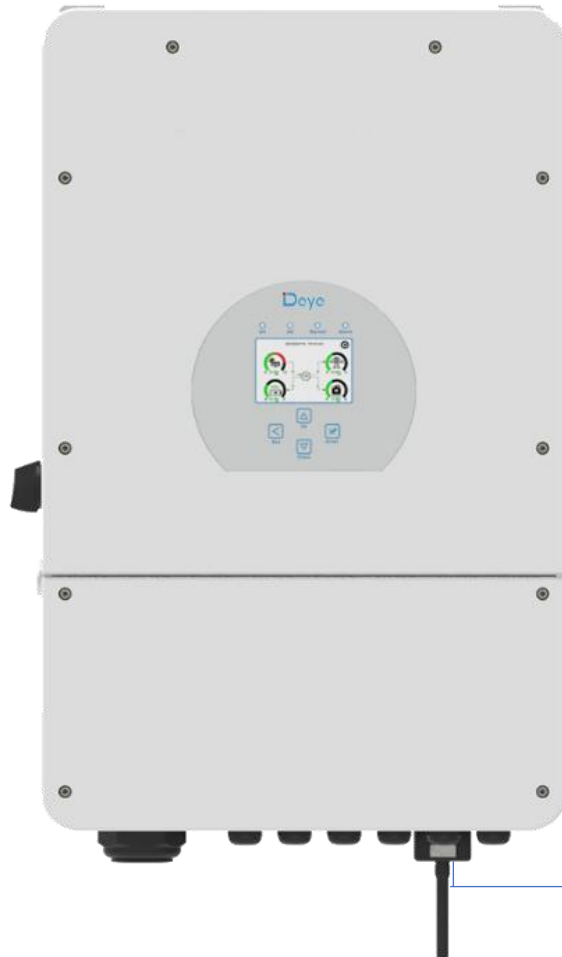
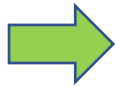
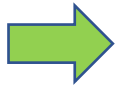
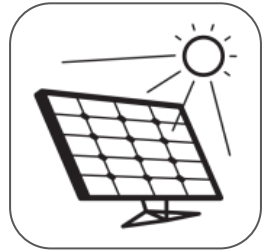
Certifications and Standards

Grid Regulation	EN50549,AS4777.2,VDE0126,IEC61727,VDEN4105,G99,NBT32004,CEI0-21, NRS097,NBR16149/16150,RD1699
Safety EMC / Standard	IEC62109-1/-2, EN61000-6-1,EN61000-6-2,EN61000-6-3,EN61000-6-4

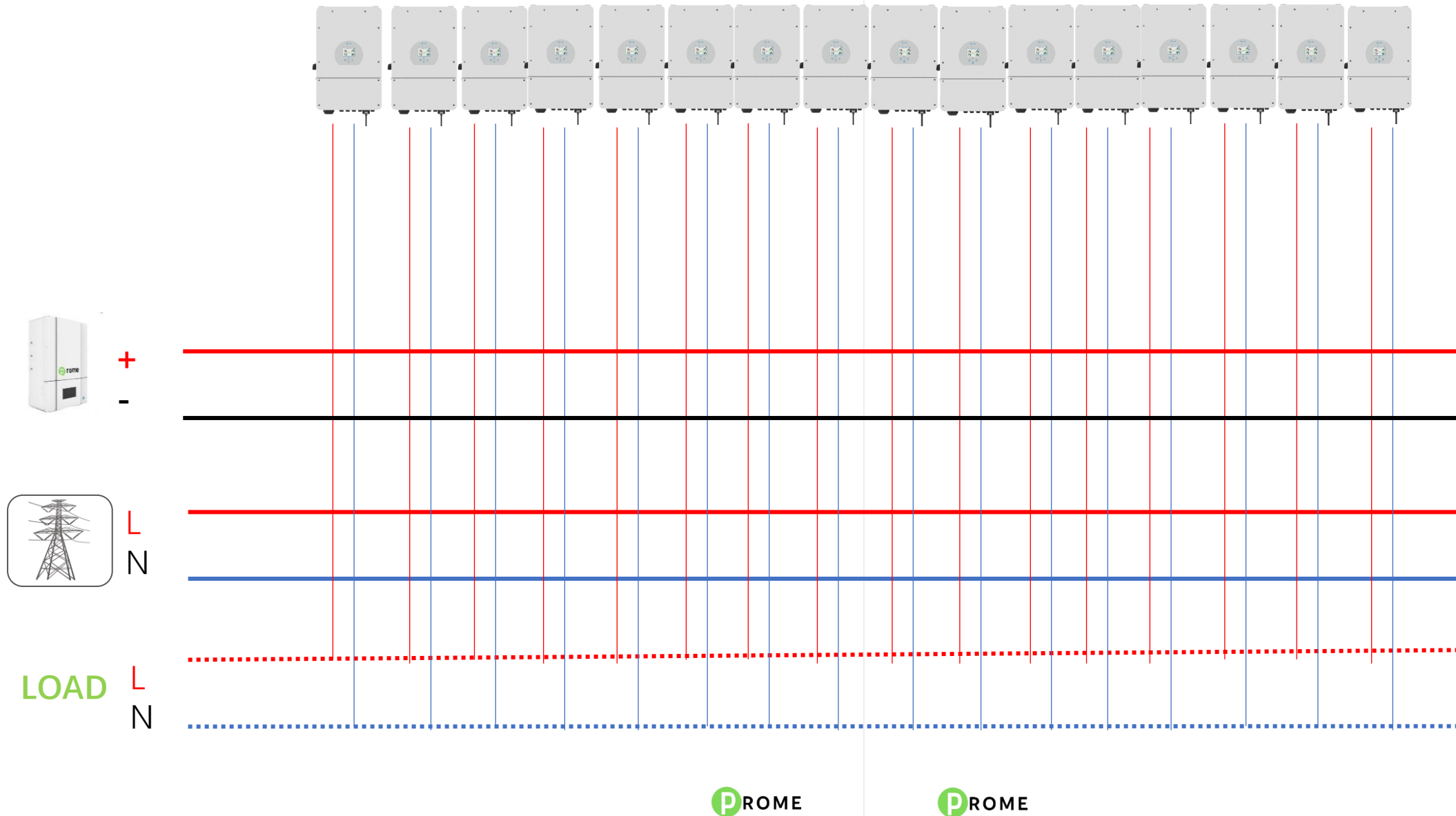
General Data

Operating Temperature Range (°C)	-45~60°C, >46°C derating
Cooling	Natural cooling
Noise (dB)	<30 dB
Communication with BMS	RS485; CAN
Weight (kg)	32
Size (mm)	420W×670H×233D
Protection Degree	IP65
Installation Style	Wall-mounted
Warranty	5 years

System Diagram



128KW GRID APPLICATION







PROME SMART SCIENCE Ltd. HK



8th Floor, Qishi Bldg., number 45-51, Qixiandao Blvd., Jianshazhui, Jiulong, Hongkong

Want to know more?

Email us: sales@promesx.com

Website: www.promesx.com